

# Isothermal Box 13L

## Dry ice (-70°C)

DATA SHEET



## Temperature controlled Packaging



All Boxes are certified by European patent : 3368841

### ADVANTAGES

- Natural & eco-friendly
- Reusable & recyclable
- Eliminates the need for a refrigerated truck (reduction of transport costs and CO2 emissions)



### HOW DOES IT WORK?

Optimised distribution and transfer of cold within the box, thanks to an innovative cork diffusion panel. The internal part of this panel is based on an ingenious multidensity structure covered by a patent.

The patented cork diffusion panel is used with dry ice. This system enables an optimised distribution of the cold on the contents and avoids thermal shocks while maximising the homogeneity of cold in the box.

### TECHNICAL CHARACTERISTICS

Product reference : 13LC  
Temperature : dry ice ( -70°C)  
Duration : 96H+  
External dimensions (mm): L386 x W316 x H441  
External Volume : 53 L  
Internal dimensions (mm) : L250 x W180 x H305  
Useful volume of product : 13L  
Weight of the box without dry ice : 4.5 KG  
Weight of dry ice (depending on type of dry ice used) : 10 KG  
Total weight : 14.5 KG

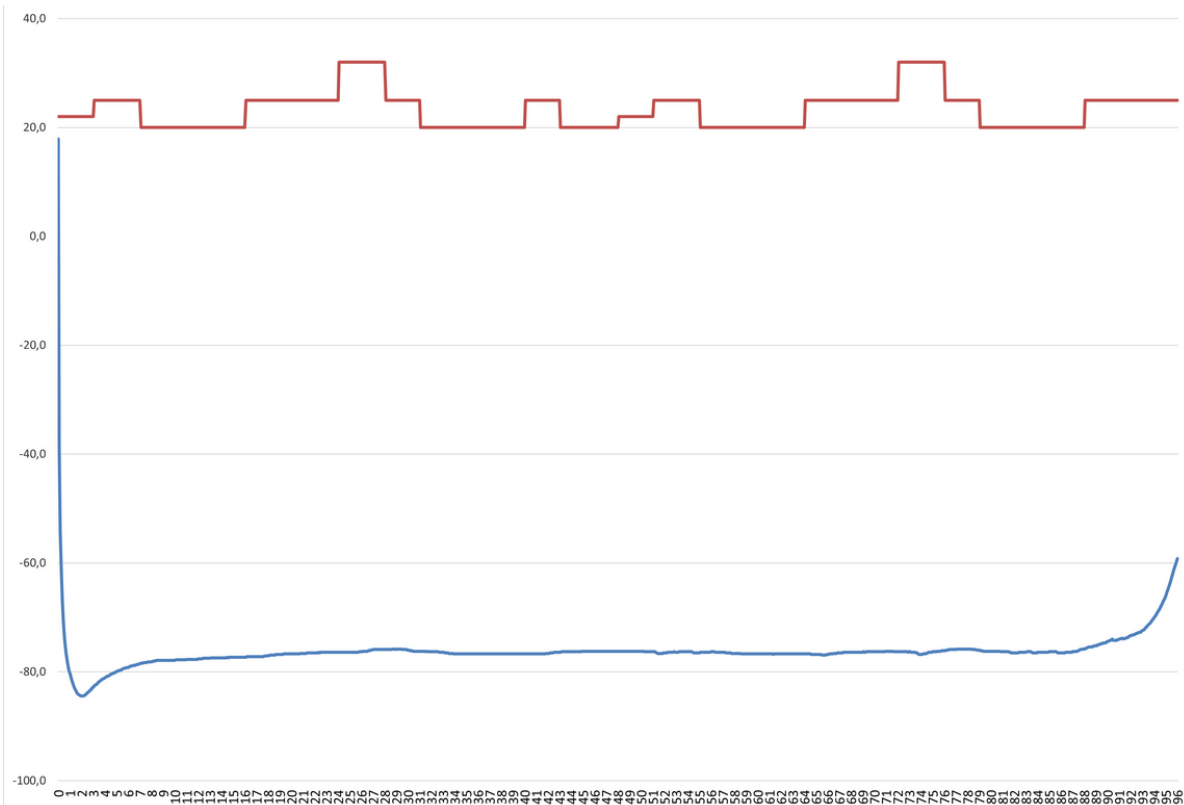
# Isothermal Box 13L

## Dry ice (-70°C)

DATA SHEET



Certified AFNOR G2 96H in an ambient Temperature of 20° to 32°  
Dry ice test



Temperature curve  
AFNOR cycle G2 96H

Effective temperature  
curve in the box