

# Isothermal Box 27L Gels

DATA SHEET



## Temperature controlled packaging



All Boxes are certified by European patent : 3368841

Certified AFNOR cycle ST-96-B by IBE-BVI

Certified ISTA 7D Winter Profile by IBE-BVI



### ADVANTAGES

- Natural & eco-friendly
- Reusable & recyclable
- Possible configuration for winter & summer
- Transport durations from 24H to 96H
- Positioning of gels only on 3 sides (saving up gels and transport volume)
- Eliminates the need for a refrigerated truck (reduction of transport costs and CO2 emissions)

### HOW DOES IT WORK?

Optimised distribution and transfer of cold within the box, thanks to an innovative cork diffusion panel. The internal part of this panel is based on an ingenious multidensity structure covered by a patent.

The patented cork diffusion panel is used with water gels and PCM gels. This system enables an optimised distribution of the cold on the contents and avoids thermal shocks while maximising the homogeneity of cold in the box.

### TECHNICAL CHARACTERISTICS

Product code : 27LG

Temperature : between 2-8° and 15-25°

Duration : 24 to 96H

External dimensions : L456 x W496 x H671

External volume : 151 L

Internal dimensions : L165 x W354 x H454

Useful volume of product : 27 L

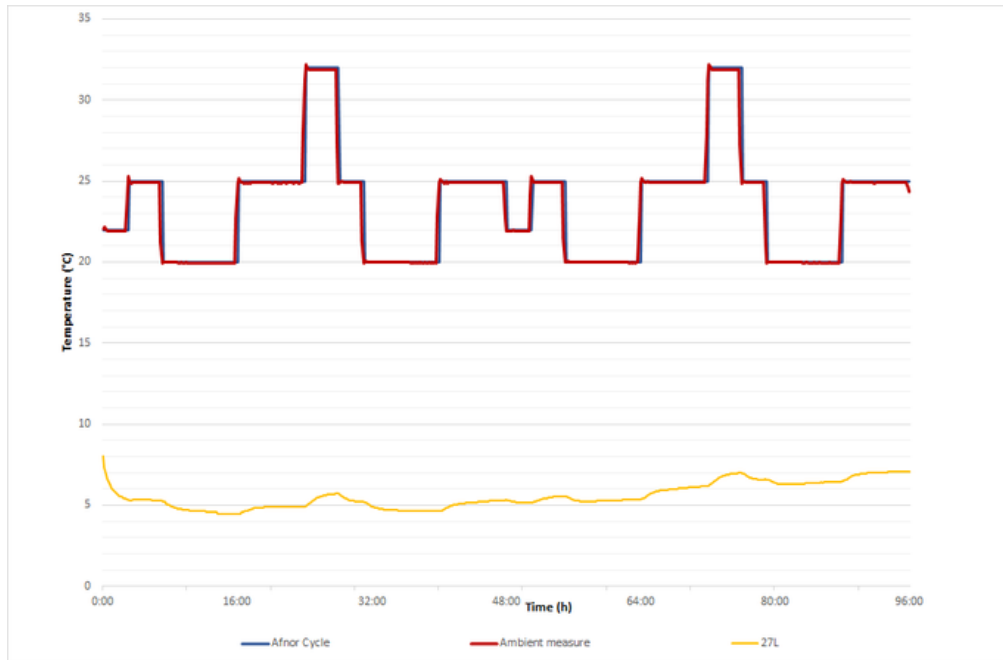
Weight of the box without gels : 8 KG

# Isothermal Box 27L Gels

DATA SHEET



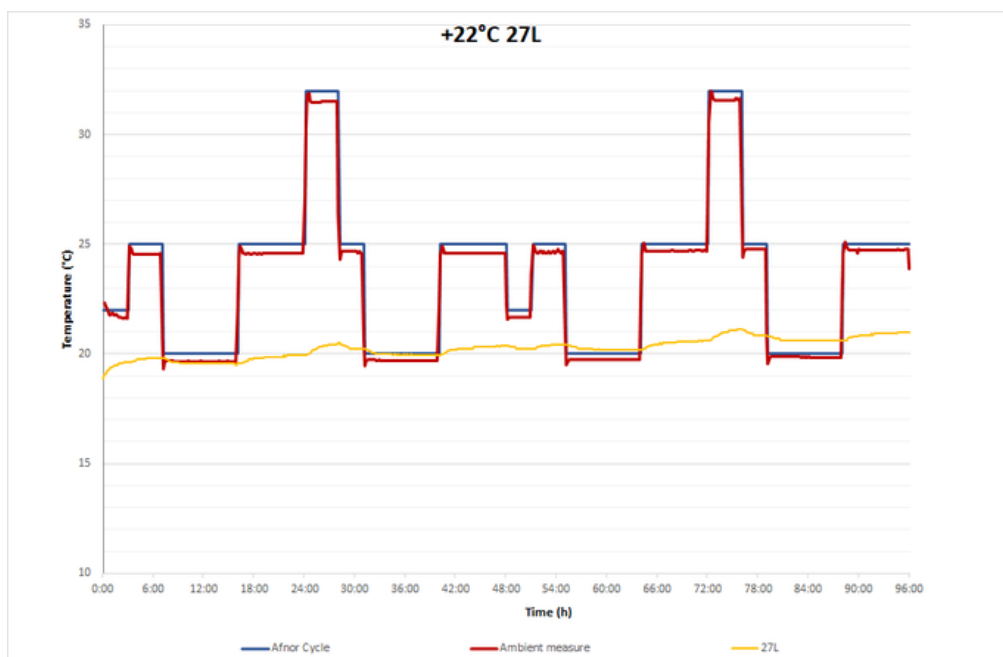
Certified AFNOR NFS99-700-cycle ST 96b in an ambient Temperature of 20° to 32°  
Test 2-8°C



Temperature Curve  
AFNOR cycle  
ST-96-B

Effective temperature  
curve of the box

Certified AFNOR NFS99-700-cycle ST 96b in an ambient Temperature of 20° to 32°  
Test 15-25°C



Temperature Curve  
AFNOR cycle  
ST-96-B

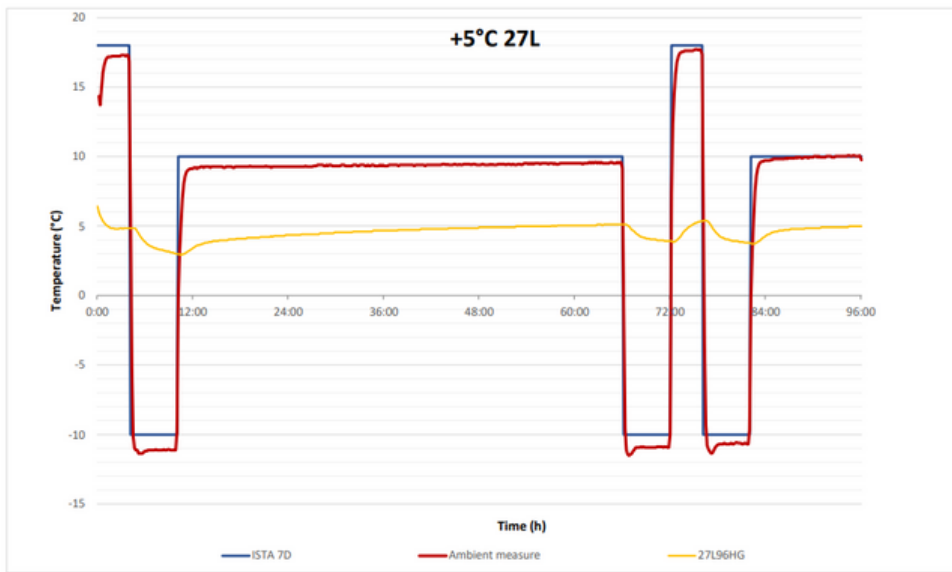
Effective temperature  
curve of the box

# Isothermal Box 27L Gels

DATA SHEET



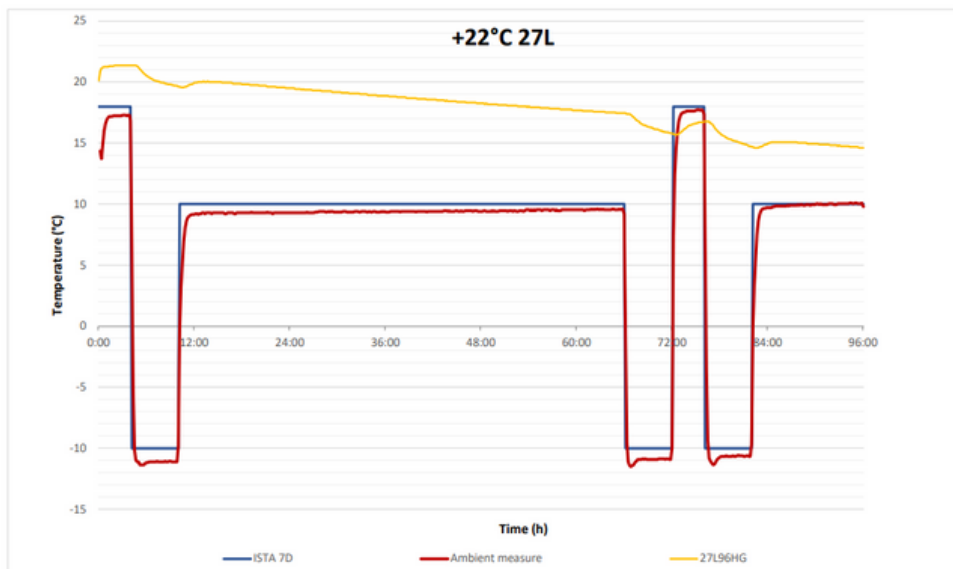
Certified AFNOR NFS99-700-cycle ST 96b in an ambient Temperature of 20° to 32°  
Test 2-8°C



Temperature Curve  
ISTA Winter 7D Profile

Effective temperature  
curve of the box

Certified AFNOR NFS99-700-cycle ST 96b in an ambient Temperature of 20° to 32°  
Test 15-25°C



Effective temperature  
curve of the box

Temperature Curve  
ISTA Winter 7D Profile