

Isothermal Box 61L

Dry ice (-70°C)

DATA SHEET



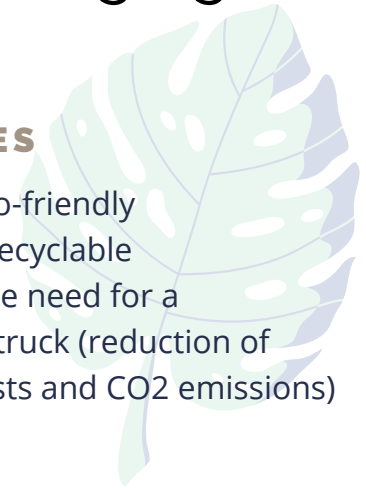
Temperature controlled Packaging



All Boxes are certified by European patent : 3368841

ADVANTAGES

- Natural & eco-friendly
- Reusable & recyclable
- Eliminates the need for a refrigerated truck (reduction of transport costs and CO2 emissions)



HOW DOES IT WORK?

Optimised distribution and transfer of cold within the box, thanks to an innovative cork diffusion panel. The internal part of this panel is based on an ingenious multidensity structure covered by a patent.

The patented cork diffusion panel is used with dry ice. This system enables an optimised distribution of the cold on the contents and avoids thermal shocks while maximising the homogeneity of cold in the box.

TECHNICAL CHARACTERISTICS

Product reference : 61LC

Temperature : dry ice (-70°C)

Duration : 144H+

External dimensions : L456 x W496 x H671

External Volume : 151 L

Internal dimensions : L320 x W360 x H535

Useful volume of product : 61 L

Weight of the box without dry ice : 9 KG

Weight of dry ice (depending on used type of dry ice) : 40 KG

Total weight : 49 KG

Isothermal Box 61L

Dry ice (-70°C)

DATA SHEET



Certified AFNOR G2 144H in an ambient Temperature of 20° to 32°
Test dry ice

